

New type plate – changes ECE R13

The current valid version of ECE R13 (series 11, Annex 2) requires an adaption of the type plates for axles. Trailer axles must in future be marked with four IDs. The meaning of these IDs is explained below.

- ID 1 Axle identification
- ID 2 Brake identification
- ID 3 Test load in daN
- ID 4 Basic number test report

ID 1 and ID3 only refer to the brake. The stat. permissible axle load depends greatly on the axle beam and the wheel bearings and differs in most cases from ID3. Therefore the stat. permissible axle load is still stated on the type plate.

Changeover to the new type plate is to take place from September 2013. The current and new type plates are shown here for clarity.

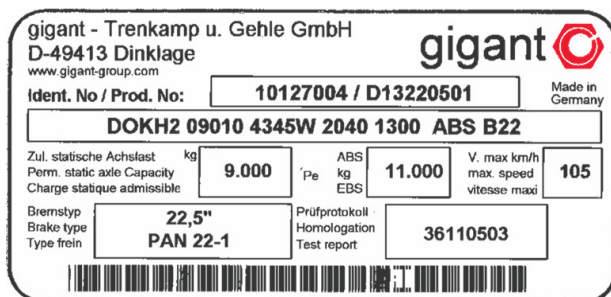


Figure 1: type plate till 09 '2013

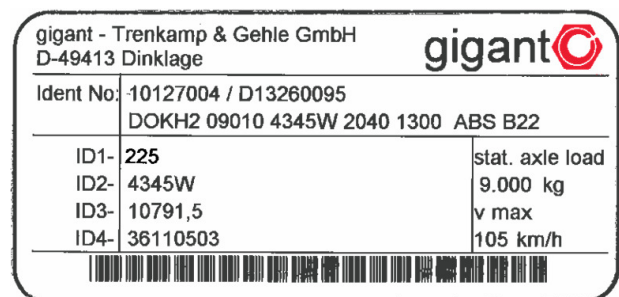


Figure 2: type plate from 09 '2013

The scope of the new Test Reports now includes so-called "information documents". These contain data on the axle, brake and the permissible distances between brake and wheels which is relevant for technical service.

The respective information documents valid for a testreport are found in the attachment to the individual testreports.

The corresponding Test Reports according to ECE R13, Change series 11, Annex 2 can be found to download at www.gigant-group.com or may be requested via homologation@gigant-group.com.

Verteiler / distribution list			Seite / page	1 / 1
⊕ Servicepartner servicepartner	⊕ Händler dealer	⊕ Kunde customer		08.07.2013