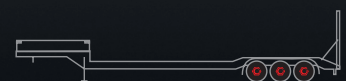
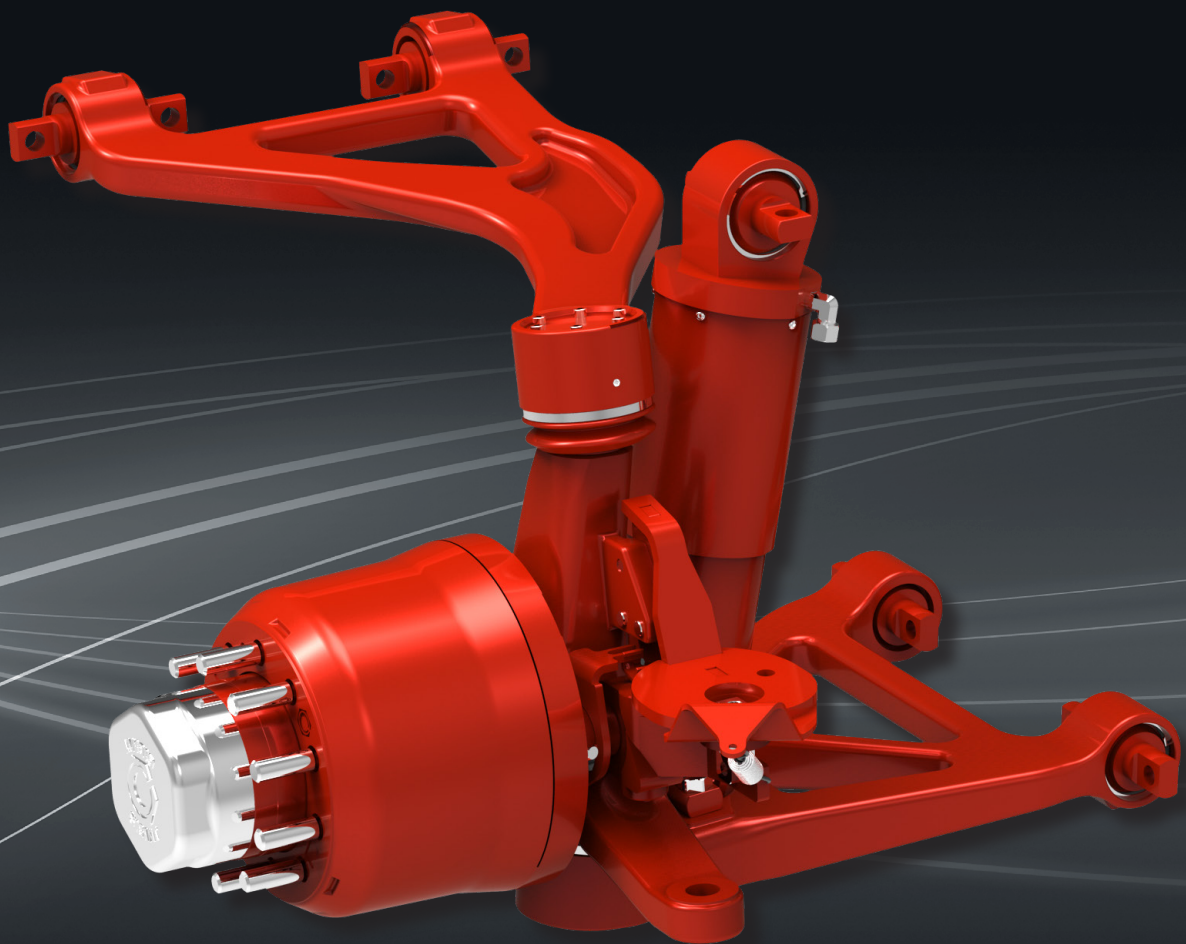


# **The low-maintenance DLS axle**

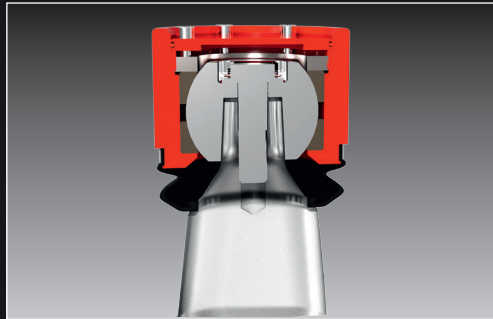
with an axle load of 12.0 t





# The low-maintenance DLS axle

with an axle load of 12.0 t

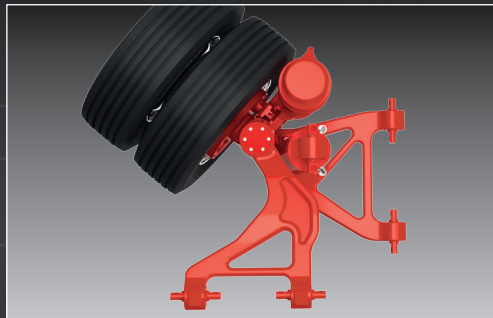


## Low-maintenance suspension arm bearings

Minimum effort and low costs

A low-maintenance bearing is a central concern for giant. In the case of the DLS axle, the demand applies equally to suspension arm and hub unit (compact bearing).

A cost-saving detail: The piston rods of the suspension cylinders are protected against stone chipping and soiling by a cover.

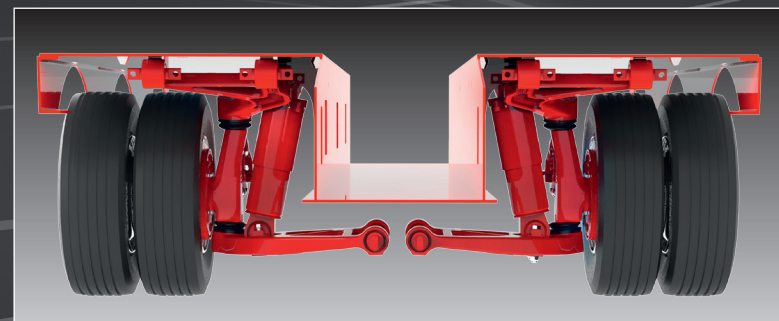


## Safely through tight curves

Manoeuvrable and stable

The independent suspension allows a steering angle of up to 57°. Thanks to the double-acting hydraulic spring cylinder, optimum driving safety with lower body roll is ensured. There is also an option to incorporate an axle lift.

Due to the steering control arrangement, the wheel alignment and camber at various riding height settings are only minimally changed. This conserves the tyres and increases their service life.



## Flexible use with maximum payload

More space and low weight

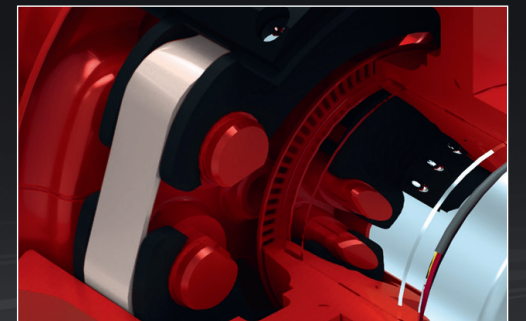
Depending on the maximum steering angle, this results in longitudinal member widths of the vehicle frame of up to 650 mm. That leaves sufficient space between the axles for excavator recesses or innovative telescoping profiles. Added to this is the generous spring travel of 300 mm. The load height with tyre size 235/75 R 17.5 or 245/70 R 17.5 is only 890 mm. And: the weight per axle line is about 60 kg less than that of comparable systems on the market.



## Drum in front of the hub

Proven and fast

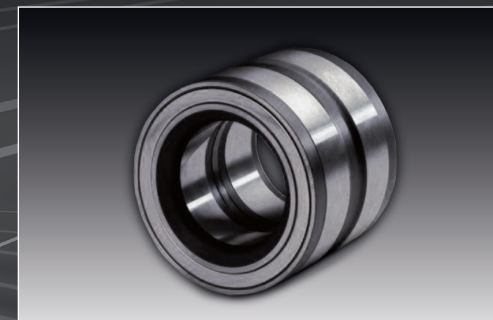
On the DLS axle, the drum has been fitted in the proven manner in front of the hub. Changing the brake lining is carried out quickly and simply as the wheel bearing no longer has to be touched – and all that without the use of special tools.



## PROTEC brakes

Easy to service

gigant's drum-braked heavy-duty axles are equipped with the tried and tested, service-friendly PROTEC drum brakes. One of the particular advantages is that the brake lining can be changed within seconds and without needing to use any special tools.



## Compact bearings

Proven and maintenance-free

All giant heavy-duty axles are equipped with completely maintenance-free compact bearings as standard. This provides extended service life without adjustment work saving time, effort and money.



gigant – Trenkamp & Gehle GmbH is a medium-sized family-owned company which began producing parts for mechanical suspension systems in 1953. In the 1990's, gigant's focus shifted on axles for low-loaders as well as steering and swing axles.



Today around 150 employees work in administration and production in Dinklage in the Oldenburger Münsterland (Germany) – expansion is on the cards. Since 2013 gigant – as a legally

independent company – has been a member of the Krone Group. This has opened up new opportunities for gigant, particularly in customer care, service and production.

The traditional and strongest product range of heavy-duty and low-loader axles is still maintained by gigant as well as the light axle segment with axle loads from 5.5 t. gigant axles are suited to the heaviest possible tasks thanks to their sturdy design and construction.

The special axle business always requires specialised know-how – here the service must be first-class and the quality must match too. Each product is specially designed to meet the customer's requirements and the use to which they will be put. This means that it is tailor-made from just one cast.

In addition, the supply of spare parts is also particularly important. The comprehensive gigant service network is just as reliable as the gigant axles and their spare parts. There are more than 700 service support points available across Europe for gigant's customers. All of this makes gigant a reliable partner.

**gigant**   
trailer axles

**gigant - Trenkamp & Gehle GmbH**  
Märschendorfer Str. 42  
49413 Dinklage | Germany  
Phone: +49 (0) 44 43 | 96 20-0  
E-Mail: [contact@gigant-group.com](mailto:contact@gigant-group.com)  
[www.gigant-group.com](http://www.gigant-group.com)

Member of the  **KRONE** group

**Service  
Locator** 

Subject to technical change without notice - Version 03/2015

